



Ford Anglia 100E



Ford Anglia 105E

# SMALL *Ford* SPARES

## Fitting a new boot lid (trunk) T-handle to a Ford Anglia 105E, using 100E parts

Unfortunately the exact 105E T-shaped handle is not currently available, but there is a very good solution using the very similar T-shaped boot handle from the older 100E (so purists, look away now).



Original 105E handle



Original 105E handle



Original 105E handle

100E boot lid T-handle as fitted to all the 100E variants (Anglia, Popular, Prefect, Escort and Squire), Small Ford part number 100E-7043500, supplied with fitted lock and 2 keys. You have to look carefully to spot the differences!



Replacement 100E handle and collar



Replacement 100E handle and collar



Replacement 100E handle and collar

Measure the shaft length of the old handle and cut down the new shaft to suit.

The end section of the shaft needs to be round - this doesn't require a lathe. A grinding wheel or file and a bit of care is good enough.

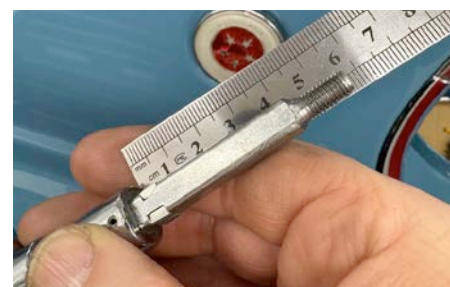
Next cut a thread using whatever die and nut you have to suit. We used a metric M6 x 1 (course thread).



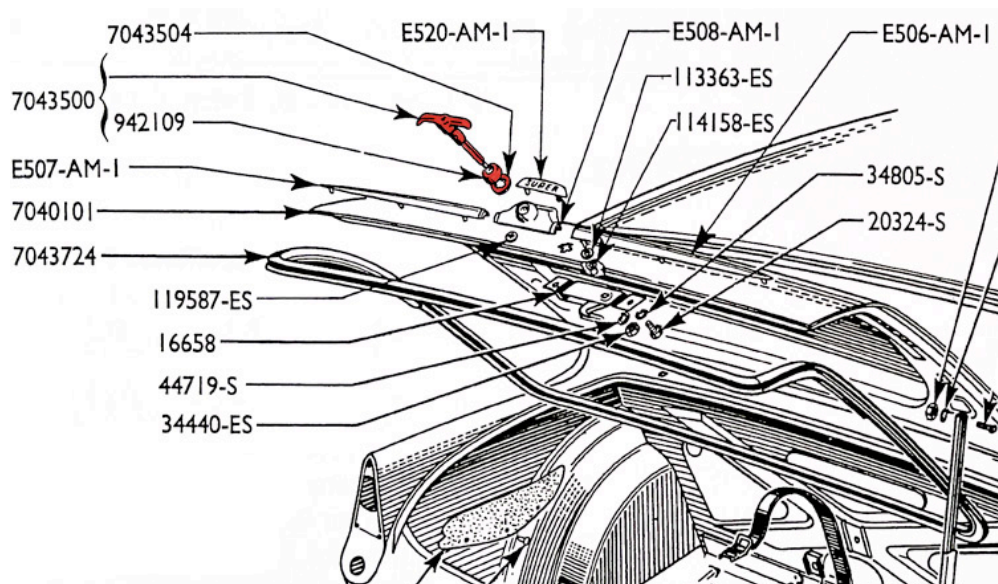
Square bar cut to length



Grind the end round



Cut thread

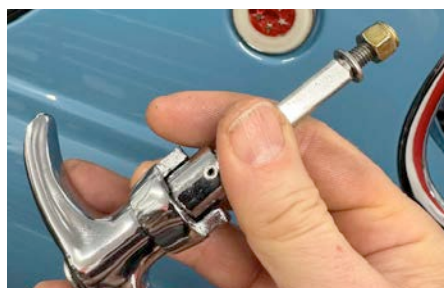


## Fitting a new boot lid (trunk) T-handle to a Ford Anglia 105E, using 100E parts - continued

As you can see the overall length is not critical, the length of remaining square shaft is important - match the old part or do it gradually and test fit as you go.



Suitable thread cutting die



Washer and M6 Nyloc nut



New handle and lock bolted in place

Bolt the new handle and catch into place with a new rubber gasket and a dab of white silicon grease. Test the locks operation **before** shutting the boot lid!



Job's a good 'un!

### Parts:

<https://www.smallfordspares.co.uk/products/100e-7043500-boot-handle-ford-100e>

<https://www.smallfordspares.co.uk/products/e93a-7043504-boot-handle-gasket>